

## INFO Nº1404

NOVO PRODUTO DISPONÍVEL

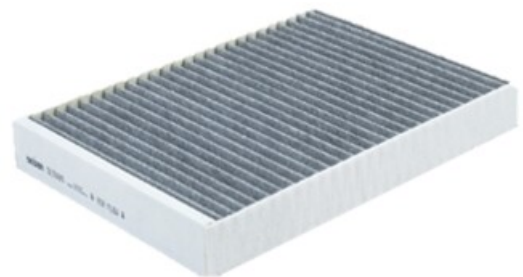
# AHC722



Filtro de habitáculo

### Aplicações

**MERCEDES BENZA** 160 (W177),  
 A 180 (W177), A 200 (W177), A 220 (W177),  
 A 250 (W177), A 250 e (W177), A 35 AMG (W177),  
 A 45 AMG (W177), AMG A 35 Mild-Hybrid (W177),  
 B 160 (W247), B 200 (W247), B 220 (W247),  
 B 250 (W247), CLA 180 (C118),  
 CLA 200 (C118) 150, CLA 220 (C118),  
 CLA 250 (C118), CLA 250 e (C118),  
 CLA 45 AMG (C118), CLASSE A (W177),  
 CLASSE B (W247),  
 CLASSE CLA (C118) / CLA SHOOTING BRAKE (X118),  
 CLASSE GLA (X247), CLASSE GLB (X247),  
 EQA (H243), EQB (X243), GLA (X247) 180,  
 GLB 180, GLB 180d, GLB 200, GLB 200d,  
 GLB 220d, GLB 250, GLB 35 AMG



FILTERS  
**purflux** AHC722

### Dimensões (mm)

Altura	37
Comprimento	230
Largura	254

### Correspondencias

### Embalagem

Dimensão palette (mm)	1200 x 800
Quantidade	300
Unidade de embalagem	1
Peso/filtro (g)	204

BOSCH	R5609
COOPERSFIAAM	PCK8563
CORTECO	49457424
EUROREPAR	107833
FEBI	107833
FILTRON	K1419A
FRAM	CFA12573
HENGST	E5965LC
LUCAS	□LFCK356
MAHLE	LAK1467
MANN	CUK28013
MANN	FP28013
MECAFILTER	□EKR7411
MERCEDES BENZ	2478300800
MERCEDES BENZ	2478301702
MERCEDES BENZ	2478307203
MERCEDES BENZ	A2478300800
MERCEDES BENZ	A2478301702
MERCEDES BENZ	A2478307203
MEYLE	123200046
SIDAT	□2501
SIVENTO	□G442
TECNOCAR	EC818
WIX	WP2191

21/12/2023

Dimensão da caixa (mm) 264 x 230 x 35

## Informações complementares