

INFO ŠT.1645

NOV PROIZVOD

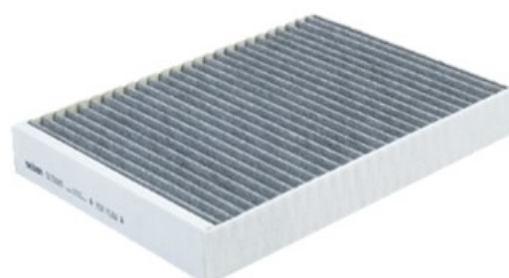
CFA12792



Kabinski filter

aplikacije

MERCEDES BENZA 160 (W177),
 A 180 (W177), A 200 (W177), A 220 (W177),
 A 250 (W177), A 35 AMG (W177),
 A 45 AMG (W177), B 160 (W247), B 180 (W247),
 B 200 (W247), B 220 (W247), B 250 (W247),
 CLA 180 (C118), CLA 200 (C118) 150,
 CLA 220 (C118), CLA 250 (C118),
 CLA 35 AMG (C118), CLA 45 AMG (C118),
 CLASSE A (W177), CLASSE B (W247),
 CLASSE CLA (C118) / CLA SHOOTING BRAKE (X118),
 CLASSE GLA (X247), CLASSE GLB (X247),
 EQA (H243), EQB (X243), GLA (X247) 180,
 GLA (X247) 200, GLA (X247) 220 d,
 GLA (X247) 250, GLA (X247) AMG 35,
 GLA (X247) AMG 45, GLB 180, GLB 200,
 GLB 220 Mid-Hybrid, GLB 250, GLB 35 AMG



FRAM CFA12792

dimenzije (mm)

| | |
|---------|-----|
| Visina | 37 |
| Dolžina | 230 |
| Sirina | 254 |

primerjave

pakiranje

| | |
|-----------------------|------------|
| dimenzije paleta (mm) | 1200 x 800 |
| količina | 300 |
| pakirano po | 1 |

| | |
|---------------|-------------|
| BOSCH | 1987435609 |
| BOSCH | R5609 |
| COOPERSFIAAM | PCK8563 |
| CORTECO | 49457424 |
| EUROREPAR | 107833 |
| FEBI | 107833 |
| FILTRON | K1419A |
| HENGST | E5965LC |
| LUCAS | □LFCK356 |
| MAHLE | LAK1467 |
| MANN | CUK28013 |
| MANN | FP28013 |
| MECAFILTER | □EKR7411 |
| MERCEDES BENZ | 2478300800 |
| MERCEDES BENZ | 2478301702 |
| MERCEDES BENZ | 2478307203 |
| MERCEDES BENZ | A2478300800 |
| MERCEDES BENZ | A2478301702 |
| MERCEDES BENZ | A2478307203 |
| MEYLE | 123200046 |
| SIDAT | □2501 |
| SIVENTO | □G442 |
| TECNOCAR | EC818 |
| WIX | WP2191 |

21/12/2023

| | |
|-----------------------|----------------|
| teža/filter (g) | 204 |
| dimenzije škatel (mm) | 264 x 230 x 35 |

dodatne informacije