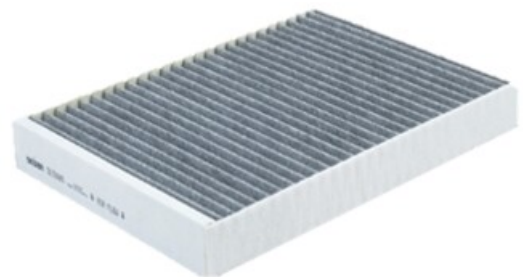


INFO Nº1634

NOVO PRODUTO DISPONÍVEL

PCK8563**Filtro de habitáculo****Aplicações**

MERCEDES BENZA 160 (W177),
A 180 (W177), A 200 (W177), A 220 (W177),
A 250 (W177), A 35 AMG (W177),
A 45 AMG (W177), B 160 (W247), B 180 (W247),
B 200 (W247), B 220 (W247), B 250 (W247),
CLA 180 (C118), CLA 200 (C118) 150,
CLA 220 (C118), CLA 250 (C118),
CLA 35 AMG (C118), CLA 45 AMG (C118),
CLASSE A (W177), CLASSE B (W247),
CLASSE CLA (C118) / CLA SHOOTING BRAKE (X118),
CLASSE GLA (X247), CLASSE GLB (X247),
EQA (H243), EQB (X243), GLA (X247) 180,
GLA (X247) 200, GLA (X247) 220 d,
GLA (X247) 250, GLA (X247) AMG 35, GLB 180,
GLB 200, GLB 220 Mld-Hybrid, GLB 250,
GLB 35 AMG

**COOPERS**
FIAAM FILTERS**PCK8563****Dimensões (mm)**

| | |
|-------------|-----|
| Altura | 37 |
| Comprimento | 230 |
| Largura | 254 |

Correspondências**Embalagem**

| | |
|-----------------------|------------|
| Dimensão palette (mm) | 1200 x 800 |
| Quantidade | 300 |
| Unidade de embalagem | 1 |

| | |
|---------------|-------------|
| BOSCH | 1987435609 |
| BOSCH | R5609 |
| CORTECO | 49457424 |
| EUROREPAR | 107833 |
| FEBI | 107833 |
| FILTRON | K1419A |
| FRAM | CFA12573 |
| HENGST | E5965LC |
| LUCAS | □LFCK356 |
| MAHLE | LAK1467 |
| MANN | CUK28013 |
| MANN | FP28013 |
| MECAFILTER | □EKR7411 |
| MERCEDES BENZ | 2478300800 |
| MERCEDES BENZ | 2478301702 |
| MERCEDES BENZ | 2478307203 |
| MERCEDES BENZ | A2478300800 |
| MERCEDES BENZ | A2478301702 |
| MERCEDES BENZ | A2478307203 |
| MEYLE | 123200046 |
| PURFLUX | AHC722 |
| SIDAT | □2501 |
| SIVENTO | □G442 |
| TECNOCAR | EC818 |
| WIX | WP2191 |

21/12/2023

| | |
|------------------------|----------------|
| Peso/filtro (g) | 204 |
| Dimensão da caixa (mm) | 264 x 230 x 35 |

Informações complementares