

## INFO NR996

NOWY PRODUKT

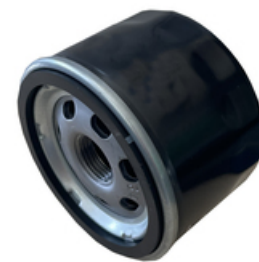
# R1106



Filtr oleju

### Zastosowania

**BMW** C 400 X, C 600 Sport, C 650 GT,  
C 650 Sport, F 650 GS, F 700 GS, F 800 GS,  
HP 2 Enduro, HP 2 Megamoto, HP 2 Sport,  
i3 Electric-petrol 100, i3 Electric-petrol 170,  
i3 Electric-petrol 185, SERIE i3



**tecnocar** FILTER R1106

### Wymiary (mm)

|              |            |
|--------------|------------|
| Wysokość     | 58         |
| Ø zewnętrzna | 76         |
| Gwint        | 3/4-16 UNF |

### Zamienniki

|              |             |
|--------------|-------------|
| BLUE PRINT   | ADBP210077  |
| BMW          | 11427673541 |
| BMW          | 11427707217 |
| BOSCH        | F026407251  |
| BOSCH        | P7251       |
| COOPERSFIAAM | FT6874      |
| FEBI         | 175012      |
| FRAM         | PH6015      |
| MAHLE        | OC306       |
| MANN         | MW75        |
| MECAFILTER   | ELH4533     |
| PURFLUX      | LS1164      |

### Opakowania

|                         |              |
|-------------------------|--------------|
| Wymiary Paleta (mm)     | 1200 x 800   |
| Ilość                   | 1764         |
| Pakowane przez          | 6            |
| Waga / filtr (g)        | 259          |
| Wymiary opakowania (mm) | 80 x 80 x 60 |

## Informacje dodatkowe