

INFO N°1602

NOUVEAU PRODUIT DISPONIBLE

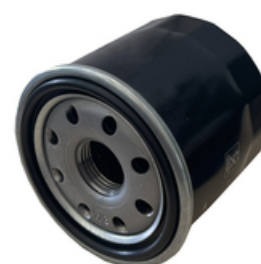
FT6872



Filtre à huile

Applications

LEXUS ES IV 250, ES IV 300h,
RX V (_LA1_, _LH1_) 350h E-Four,
RX V (_LA1_, _LH1_) 450h+ E-Four,
RX V (_LA1_, _LH1_) 500h, UX 200, UX 250h
MAZDA 2 (KB) 1.5 Hybrid
SUZUKI Across (A5Z_) 2.5 Hybrid
TOYOTA Corolla Cross 1.8 Hybrid,
Corolla Cross 2.0 VVTi Hybrid,
Corolla XII 2.0 Hybrid 184,
Corolla XII 2.0 Hybrid 196, Corolla XII 2.0 VVTi,
Highlander 2.5 Hybrid, RAV 4 V 2.0 VVTi 175,
RAV 4 V 2.5 Hybrid 175, RAV 4 V 2.5 Hybrid 185,
RAV 4 V 2.5 Hybrid 218, RAV 4 V 2.5 Hybrid 222,
RAV 4 V 2.5 Hybrid 306, Yaris 1.5,
Yaris 1.5 Hybrid, Yaris 1.6 GR, Yaris Cross 1.5,
Yaris Cross 1.5 Hybrid



COOPERS
FIAAM FILTERS FT6872

Dimensions (mm)

Hauteur	65
Ø extérieur	65
Taroudage	3/4-16 UNF

Correspondances

Conditionnement

Dimensions palette (mm)	1200 x 800
Quantité	2080
Unité de Cond.	8

BOSCH	F026407306
FEBI	27149
FILTRON	OP618/2
FRAM	PH12671
HENGST	H97W07
MAHLE	OC534
MANN	W6031
MECAFILTER	ELH4512
PURFLUX	LS1156
TECNOCAR	R1104
TOYOTA	9091510009
WIX	WL7593

15/09/2023

Poids / filtre (g)	215
Dimensions boîte (mm)	71 x 71 x 70

Informations complémentaires